



Economic Overview

January 1, 2022

Taney County, Missouri



Taney County Partnership
Branson/Lakes Area Chamber of Commerce
4100 Gretna Rd
Branson, MO 65616
<https://www.taneycountypartnership.com>

Demographic Profile.....	3
Employment Trends	5
Unemployment Rate	5
Wage Trends.....	6
Cost of Living Index.....	7
Industry Snapshot.....	8
Occupation Snapshot	10
Industry Clusters.....	12
Education Levels.....	13
Gross Domestic Product	14
Taney County, Missouri Regional Map.....	15
FAQ.....	16

Demographic Profile

The population in Taney County, Missouri was 55,114 per American Community Survey data for 2015-2019.

The region has a civilian labor force of 26,555 with a participation rate of 59.3%. Of individuals 25 to 64 in Taney County, Missouri, 21.3% have a bachelor's degree or higher which compares with 33.5% in the nation.

The median household income in Taney County, Missouri is \$46,031 and the median house value is \$139,800.

Summary¹

	Percent			Value		
	Taney County, Missouri	Missouri	USA	Taney County, Missouri	Missouri	USA
Demographics						
Population (ACS)	—	—	—	55,114	6,104,910	324,697,795
Male	48.3%	49.1%	49.2%	26,630	2,995,725	159,886,919
Female	51.7%	50.9%	50.8%	28,484	3,109,185	164,810,876
Median Age ²	—	—	—	42.2	38.6	38.1
Under 18 Years	21.2%	22.6%	22.6%	11,708	1,381,612	73,429,392
18 to 24 Years	9.8%	9.4%	9.4%	5,426	573,249	30,646,327
25 to 34 Years	11.2%	13.3%	13.9%	6,166	813,407	45,030,415
35 to 44 Years	10.9%	12.1%	12.6%	6,001	738,183	40,978,831
45 to 54 Years	12.2%	12.6%	13.0%	6,717	769,927	42,072,620
55 to 64 Years	13.4%	13.5%	12.9%	7,367	821,807	41,756,414
65 to 74 Years	12.6%	9.5%	9.1%	6,917	577,726	29,542,266
75 Years, and Over	8.7%	7.0%	6.5%	4,812	428,999	21,241,530
Race: White	91.7%	82.2%	72.5%	50,517	5,015,904	235,377,662
Race: Black or African American	1.5%	11.5%	12.7%	839	701,334	41,234,642
Race: American Indian and Alaska Native	1.0%	0.4%	0.8%	552	27,084	2,750,143
Race: Asian	1.0%	2.0%	5.5%	546	120,654	17,924,209
Race: Native Hawaiian and Other Pacific Islander	0.0%	0.1%	0.2%	12	8,231	599,868
Race: Some Other Race	2.6%	1.2%	4.9%	1,436	71,335	16,047,369
Race: Two or More Races	2.2%	2.6%	3.3%	1,212	160,368	10,763,902
Hispanic or Latino (of any race)	5.9%	4.2%	18.0%	3,260	254,791	58,479,370
Population Growth						
Population (Pop Estimates) ⁴	—	—	—	56,104	6,151,548	329,484,123
Population Annual Average Growth ⁴	0.8%	0.3%	0.6%	420	15,546	2,015,698
People per Square Mile	—	—	—	88.4	89.3	92.9
Economic						
Labor Force Participation Rate and Size (civilian population 16 years and over)	59.3%	62.8%	63.2%	26,555	3,055,789	163,555,585
Prime-Age Labor Force Participation Rate and Size (civilian population 25-54)	82.2%	82.6%	82.1%	15,515	1,909,998	104,634,905
Armed Forces Labor Force	0.0%	0.4%	0.4%	6	18,850	1,073,907
Veterans, Age 18-64	5.4%	5.3%	4.6%	1,696	195,582	9,143,042
Veterans Labor Force Participation Rate and Size, Age 18-64	73.5%	74.1%	76.6%	1,246	144,845	7,003,778
Median Household Income ²	—	—	—	\$46,031	\$55,461	\$62,843
Per Capita Income	—	—	—	\$23,776	\$30,810	\$34,103
Mean Commute Time (minutes)	—	—	—	22.7	23.9	26.9
Commute via Public Transportation	0.5%	1.3%	5.0%	132	38,268	7,641,160
Educational Attainment, Age 25-64						
No High School Diploma	11.0%	8.8%	10.9%	2,881	277,718	18,550,150
High School Graduate	31.9%	28.6%	25.7%	8,369	897,440	43,627,868
Some College, No Degree	26.7%	22.6%	20.7%	6,996	709,824	35,174,790

Summary¹

	Percent			Value		
	Taney County, Missouri	Missouri	USA	Taney County, Missouri	Missouri	USA
Associate's Degree	9.2%	8.9%	9.1%	2,415	278,447	15,526,064
Bachelor's Degree	15.0%	19.7%	21.2%	3,943	618,480	35,997,848
Postgraduate Degree	6.3%	11.5%	12.3%	1,647	361,415	20,961,560
Housing						
Total Housing Units	—	—	—	30,833	2,790,397	137,428,986
Median House Value (of owner-occupied units) ²	—	—	—	\$139,800	\$157,200	\$217,500
Homeowner Vacancy	3.3%	1.7%	1.6%	465	27,891	1,257,737
Rental Vacancy	6.5%	6.3%	6.0%	597	54,781	2,793,023
Renter-Occupied Housing Units (% of Occupied Units)	38.3%	33.2%	36.0%	8,532	802,535	43,481,667
Occupied Housing Units with No Vehicle Available (% of Occupied Units)	5.9%	6.9%	8.6%	1,316	165,906	10,395,713
Social						
Poverty Level (of all people)	14.7%	13.7%	13.4%	7,839	810,045	42,510,843
Households Receiving Food Stamps/SNAP	14.6%	11.1%	11.7%	3,243	268,633	14,171,567
Enrolled in Grade 12 (% of total population)	1.1%	1.3%	1.4%	632	78,114	4,422,344
Disconnected Youth ³	3.1%	2.8%	2.5%	95	8,774	423,273
Children in Single Parent Families (% of all children)	35.1%	33.9%	34.1%	3,719	440,546	23,790,005
Uninsured	15.8%	9.3%	8.8%	8,657	559,885	28,248,613
With a Disability, Age 18-64	14.8%	12.5%	10.3%	4,668	453,975	20,187,604
With a Disability, Age 18-64, Labor Force Participation Rate and Size	47.2%	41.1%	42.2%	2,203	186,435	8,509,463
Foreign Born	4.1%	4.2%	13.6%	2,243	255,719	44,011,870
Speak English Less Than Very Well (population 5 yrs and over)	1.8%	2.2%	8.4%	956	126,914	25,615,365

Source: [JobsEQ®](#)

1. American Community Survey 2015-2019, unless noted otherwise

2. Median values for certain aggregate regions (such as MSAs) may be estimated as the weighted averages of the median values from the composing counties.

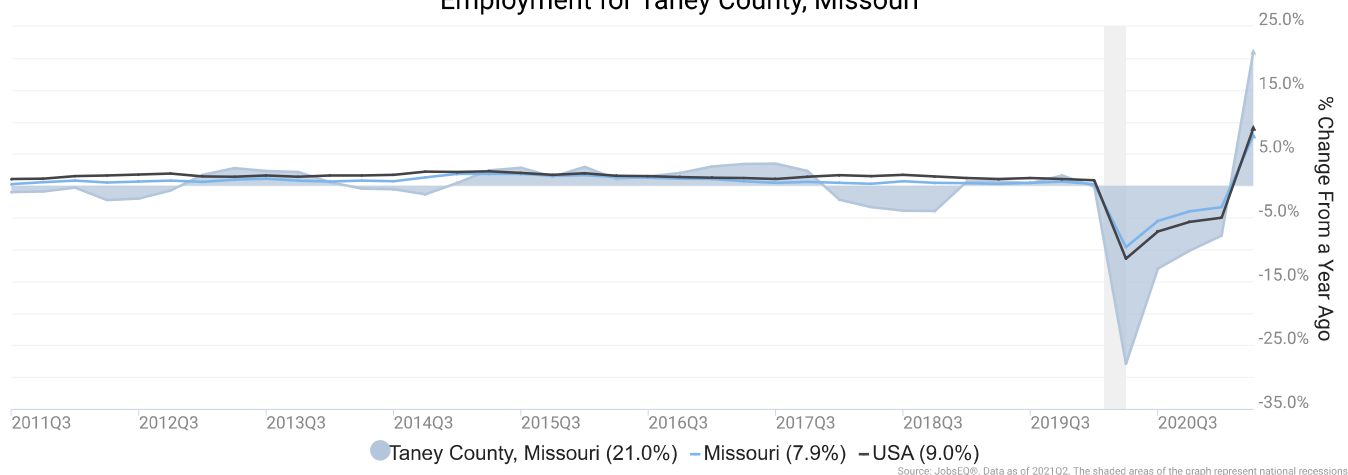
3. Disconnected Youth are 16-19 year olds who are (1) not in school, (2) not high school graduates, and (3) either unemployed or not in the labor force.

4. Census 2020, annual average growth rate since 2010

Employment Trends

As of 2021Q2, total employment for Taney County, Missouri was 28,113 (based on a four-quarter moving average). Over the year ending 2021Q2, employment increased 21.0% in the region.

Employment for Taney County, Missouri

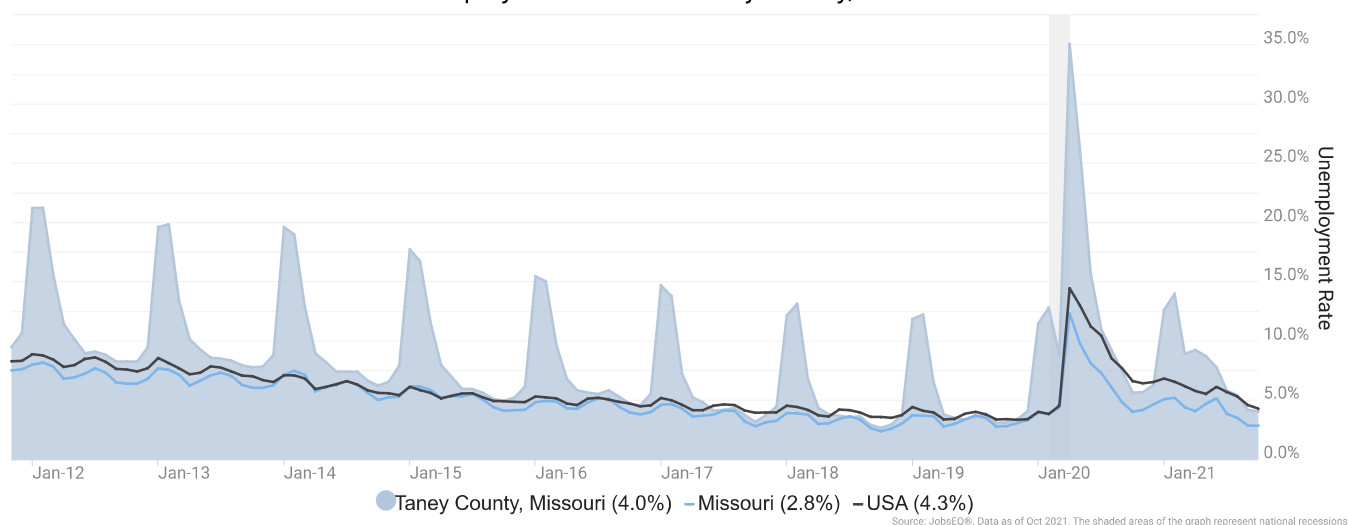


Employment data are derived from the Quarterly Census of Employment and Wages, provided by the Bureau of Labor Statistics and imputed where necessary. Data are updated through 2021Q1 with preliminary estimates updated to 2021Q2.

Unemployment Rate

The unemployment rate for Taney County, Missouri was 4.0% as of October 2021. The regional unemployment rate was lower than the national rate of 4.3%. One year earlier, in October 2020, the unemployment rate in Taney County, Missouri was 5.6%.

Unemployment Rate for Taney County, Missouri

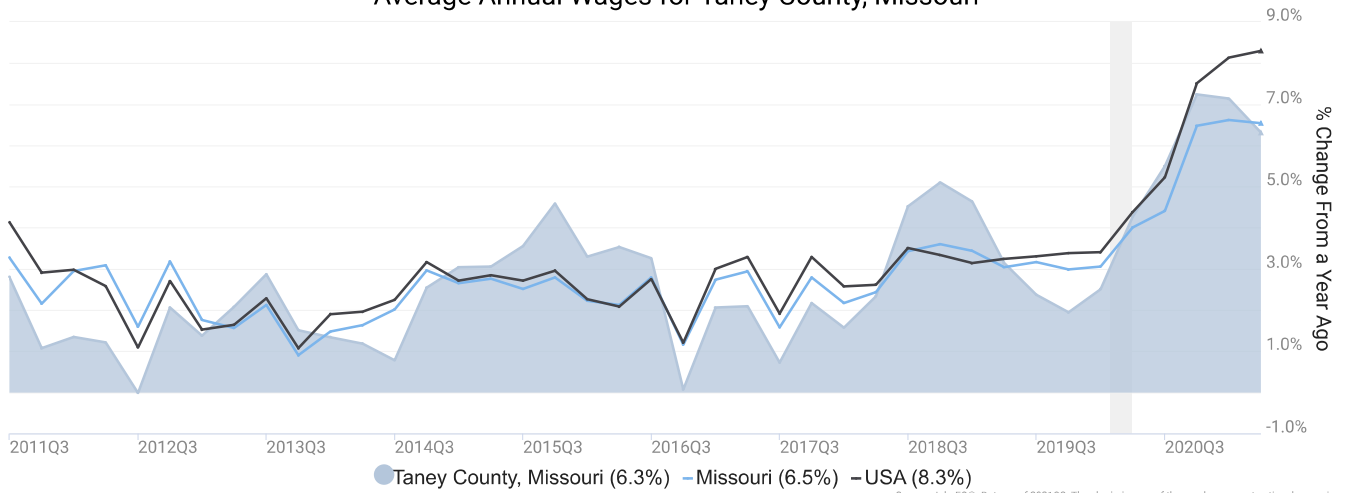


Unemployment rate data are from the Local Area Unemployment Statistics, provided by the Bureau of Labor Statistics and updated through October 2021.

Wage Trends

The average worker in Taney County, Missouri earned annual wages of \$34,831 as of 2021Q2. Average annual wages per worker increased 6.3% in the region over the preceding four quarters. For comparison purposes, annual average wages were \$64,141 in the nation as of 2021Q2.

Average Annual Wages for Taney County, Missouri



Annual average wages per worker data are derived from the Quarterly Census of Employment and Wages, provided by the Bureau of Labor Statistics and imputed where necessary. Data are updated through 2021Q1 with preliminary estimates updated to 2021Q2.

Cost of Living Index

The Cost of Living Index estimates the relative price levels for consumer goods and services. When applied to wages and salaries, the result is a measure of relative purchasing power. The cost of living is 10.5% lower in Taney County, Missouri than the U.S. average.

Cost of Living Information

	Annual Average Salary	Cost of Living Index (Base US)	US Purchasing Power
Taney County, Missouri	\$34,831	89.5	\$38,896
Missouri	\$53,569	88.4	\$60,583
USA	\$64,141	100.0	\$64,141

Source: [JobsEQ®](#)

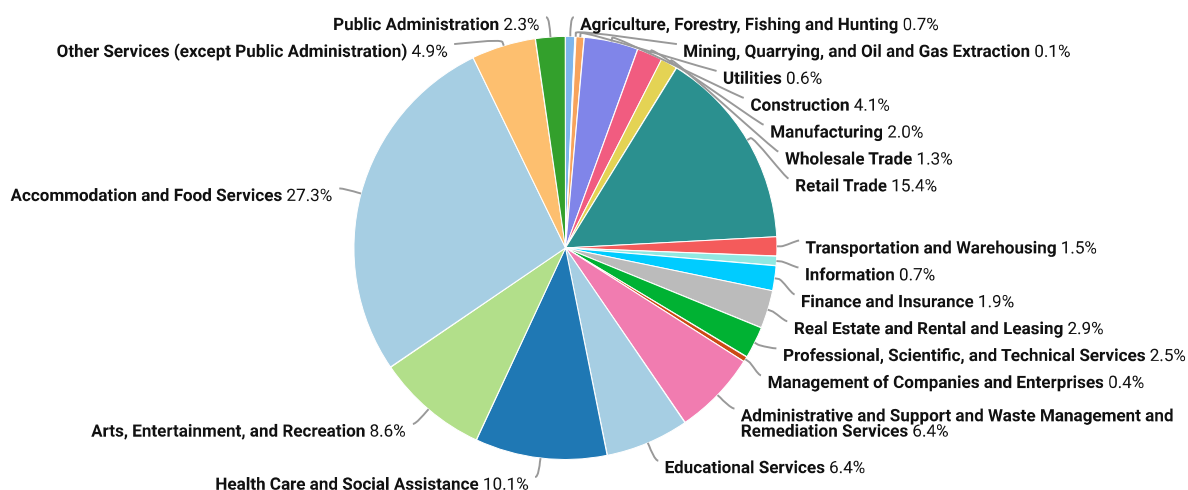
Data as of 2021Q2

Cost of Living per C2ER, data as of 2021Q2, imputed by Chmura where necessary.

Industry Snapshot

The largest sector in Taney County, Missouri is Accommodation and Food Services, employing 7,680 workers. The next-largest sectors in the region are Retail Trade (4,316 workers) and Health Care and Social Assistance (2,837). High location quotients (LQs) indicate sectors in which a region has high concentrations of employment compared to the national average. The sectors with the largest LQs in the region are Arts, Entertainment, and Recreation (LQ = 5.37), Accommodation and Food Services (3.59), and Real Estate and Rental and Leasing (1.67).

Total Workers for Taney County, Missouri by Industry



Source: JobsEQ®, Data as of 2021Q2

Employment data are derived from the Quarterly Census of Employment and Wages, provided by the Bureau of Labor Statistics and imputed where necessary. Data are updated through 2021Q1 with preliminary estimates updated to 2021Q2.

Sectors in Taney County, Missouri with the highest average wages per worker are Utilities (\$78,657), Management of Companies and Enterprises (\$74,761), and Finance and Insurance (\$71,589). Regional sectors with the best job growth (or most moderate job losses) over the last 10 years are Health Care and Social Assistance (+364 jobs), Educational Services (+238), and Professional, Scientific, and Technical Services (+73).

Over the next 10 years, employment in Taney County, Missouri is projected to contract by 785 jobs. The fastest growing sector in the region is expected to be Health Care and Social Assistance with a +0.8% year-over-year rate of growth. The strongest forecast by number of jobs over this period is expected for Health Care and Social Assistance (+221 jobs), Management of Companies and Enterprises (+1), and Mining, Quarrying, and Oil and Gas Extraction (0).

Taney County, Missouri, 2021Q2¹

NAICS	Industry	Empl	Current	10-Year History			10-Year Forecast				
			Avg Ann Wages	LQ	Empl Change	Ann %	Total Demand	Exits	Transfers	Empl Growth	Ann % Growth
72	Accommodation and Food Services	7,680	\$26,557	3.59	-63	-0.1%	12,388	5,488	6,910	-10	0.0%
44	Retail Trade	4,316	\$27,603	1.47	-746	-1.6%	5,193	2,442	3,089	-338	-0.8%
62	Health Care and Social Assistance	2,837	\$52,452	0.68	364	1.4%	2,987	1,360	1,406	221	0.8%
71	Arts, Entertainment, and Recreation	2,409	\$22,673	5.37	-1,198	-4.0%	3,286	1,495	1,848	-56	-0.2%
56	Administrative and Support and Waste Management and Remediation Services	1,801	\$38,317	1.01	-98	-0.5%	1,704	820	1,119	-235	-1.4%
61	Educational Services	1,799	\$42,011	0.80	238	1.4%	1,640	795	859	-13	-0.1%
81	Other Services (except Public Administration)	1,385	\$26,008	1.14	-281	-1.8%	1,566	716	856	-6	0.0%
23	Construction	1,161	\$37,237	0.70	-1	0.0%	1,082	401	718	-37	-0.3%
53	Real Estate and Rental and Leasing	817	\$35,182	1.67	-103	-1.2%	744	363	435	-54	-0.7%
54	Professional, Scientific, and Technical Services	690	\$45,291	0.34	73	1.1%	523	211	358	-45	-0.7%
92	Public Administration	635	\$38,107	0.46	45	0.7%	566	244	332	-11	-0.2%
31	Manufacturing	550	\$44,839	0.24	-88	-1.5%	459	197	337	-74	-1.4%
52	Finance and Insurance	537	\$71,589	0.46	27	0.5%	463	184	303	-25	-0.5%
48	Transportation and Warehousing	412	\$39,451	0.30	-161	-3.2%	421	184	249	-11	-0.3%
42	Wholesale Trade	361	\$43,461	0.34	43	1.3%	336	137	227	-28	-0.8%
11	Agriculture, Forestry, Fishing and Hunting	206	\$11,099	0.52	-10	-0.5%	176	88	118	-31	-1.6%
51	Information	205	\$50,490	0.37	-191	-6.4%	172	68	121	-17	-0.8%
22	Utilities	173	\$78,657	1.15	-13	-0.7%	134	54	95	-15	-0.9%
55	Management of Companies and Enterprises	116	\$74,761	0.27	-101	-6.0%	105	39	66	1	0.1%
21	Mining, Quarrying, and Oil and Gas Extraction	21	\$36,502	0.22	-22	-6.8%	21	7	14	0	-0.1%
Total - All Industries		28,113	\$34,831	1.00	-2,283	-0.8%	29,375	12,884	17,276	-785	-0.3%

Source: [JobsEQ®](#)

Data as of 2021Q2

Note: Figures may not sum due to rounding.

1. All data based upon a four-quarter moving average

Exits and transfers are approximate estimates based upon occupation separation rates.

Employment data are derived from the Quarterly Census of Employment and Wages, provided by the Bureau of Labor Statistics and imputed where necessary. Data are updated through 2021Q1 with preliminary estimates updated to 2021Q2. Forecast employment growth uses national projections adapted for regional growth patterns.

Occupation Snapshot

The largest major occupation group in Taney County, Missouri is Food Preparation and Serving Related Occupations, employing 5,075 workers. The next-largest occupation groups in the region are Sales and Related Occupations (3,828 workers) and Office and Administrative Support Occupations (3,433). High location quotients (LQs) indicate occupation groups in which a region has high concentrations of employment compared to the national average. The major groups with the largest LQs in the region are Food Preparation and Serving Related Occupations (LQ = 2.41), Building and Grounds Cleaning and Maintenance Occupations (2.39), and Personal Care and Service Occupations (1.63).

Occupation groups in Taney County, Missouri with the highest average wages per worker are Legal Occupations (\$87,100), Architecture and Engineering Occupations (\$82,700), and Management Occupations (\$80,200). The unemployment rate in the region varied among the major groups from 2.1% among Community and Social Service Occupations to 14.6% among Food Preparation and Serving Related Occupations.

Over the next 10 years, the fastest growing occupation group in Taney County, Missouri is expected to be Healthcare Support Occupations with a +1.5% year-over-year rate of growth. The strongest forecast by number of jobs over this period is expected for Healthcare Support Occupations (+129 jobs) and Food Preparation and Serving Related Occupations (+126). Over the same period, the highest separation demand (occupation demand due to retirements and workers moving from one occupation to another) is expected in Food Preparation and Serving Related Occupations (8,802 jobs) and Sales and Related Occupations (5,319).

Taney County, Missouri, 2021Q2¹

				Current		10-Year History				10-Year Forecast				
SOC	Occupation	Empl	Mean Ann Wages²	LQ	Unempl	Unempl Rate	Online Job Ads³	Empl Change	Ann %	Total Demand	Exits	Transfers	Empl Growth	Ann % Growth
35-0000	Food Preparation and Serving Related	5,075	\$25,400	2.41	664	14.6%	293	-492	-0.9%	8,928	3,469	5,333	126	0.2%
41-0000	Sales and Related	3,828	\$36,300	1.42	301	9.1%	449	-1,096	-2.5%	4,990	2,152	3,167	-330	-0.9%
43-0000	Office and Administrative Support	3,433	\$32,800	0.96	209	6.9%	185	-581	-1.6%	3,642	1,623	2,417	-397	-1.2%
37-0000	Building and Grounds Cleaning and Maintenance	2,180	\$27,000	2.39	152	8.4%	169	-50	-0.2%	2,787	1,298	1,537	-47	-0.2%
11-0000	Management	1,561	\$80,200	0.83	46	3.4%	72	70	0.5%	1,244	425	882	-63	-0.4%
53-0000	Transportation and Material Moving	1,479	\$33,200	0.61	112	8.1%	218	4	0.0%	1,791	693	1,156	-58	-0.4%
25-0000	Educational Instruction and Library	1,312	\$45,800	0.85	58	5.7%	20	164	1.3%	1,160	525	631	5	0.0%
29-0000	Healthcare Practitioners and Technical	1,249	\$74,800	0.75	27	2.6%	305	140	1.2%	752	327	388	37	0.3%
39-0000	Personal Care and Service	1,166	\$26,900	1.63	160	14.5%	47	-314	-2.4%	2,078	938	1,125	15	0.1%
49-0000	Installation, Maintenance, and Repair	1,151	\$41,600	1.07	52	5.3%	106	18	0.2%	1,091	372	737	-18	-0.2%
13-0000	Business and Financial Operations	938	\$61,500	0.57	33	4.1%	53	58	0.6%	868	257	637	-26	-0.3%
47-0000	Construction and Extraction	932	\$45,900	0.71	65	7.7%	17	-32	-0.3%	976	298	703	-26	-0.3%
31-0000	Healthcare Support	798	\$28,800	0.63	38	5.3%	126	192	2.8%	1,172	499	544	129	1.5%
27-0000	Arts, Design, Entertainment, Sports, and Media	781	\$41,100	1.57	79	11.5%	18	-327	-3.4%	756	303	529	-75	-1.0%
51-0000	Production	696	\$36,700	0.43	51	7.4%	39	-52	-0.7%	731	298	497	-64	-1.0%
33-0000	Protective Service	459	\$38,600	0.76	33	7.9%	47	-68	-1.4%	538	241	301	-4	-0.1%

Taney County, Missouri, 2021Q2¹

SOC	Occupation	Empl	Mean Ann Wages ²	Current			10-Year History			10-Year Forecast				
				LQ	Unempl	Unempl Rate	Online Job Ads ³	Empl Change	Ann %	Total Demand	Exits	Transfers	Empl Growth	Ann % Growth
21-0000	Community and Social Service	404	\$47,200	0.80	6	2.1%	40	85	2.4%	483	157	292	34	0.8%
15-0000	Computer and Mathematical	303	\$77,800	0.34	7	2.7%	22	4	0.1%	209	50	170	-11	-0.4%
17-0000	Architecture and Engineering	150	\$82,700	0.31	4	3.6%	11	-17	-1.1%	109	35	82	-8	-0.5%
19-0000	Life, Physical, and Social Science	85	\$68,400	0.33	3	5.1%	8	8	1.0%	77	17	59	0	0.0%
23-0000	Legal	84	\$87,100	0.34	2	2.3%	n/a	-8	-0.9%	54	21	33	0	0.0%
45-0000	Farming, Fishing, and Forestry	49	\$35,700	0.26	5	8.0%	n/a	9	2.1%	73	18	58	-3	-0.7%
Total - All Occupations		28,113	\$39,700	1.00	2,107	8.6%	2,245	-2,283	-0.8%	34,510	14,015	21,279	-785	-0.3%

Source: [JobsEQ®](#)

Data as of 2021Q2 unless noted otherwise

Note: Figures may not sum due to rounding.

1. Data based on a four-quarter moving average unless noted otherwise.

2. Wage data are as of 2020 and represent the average for all Covered Employment

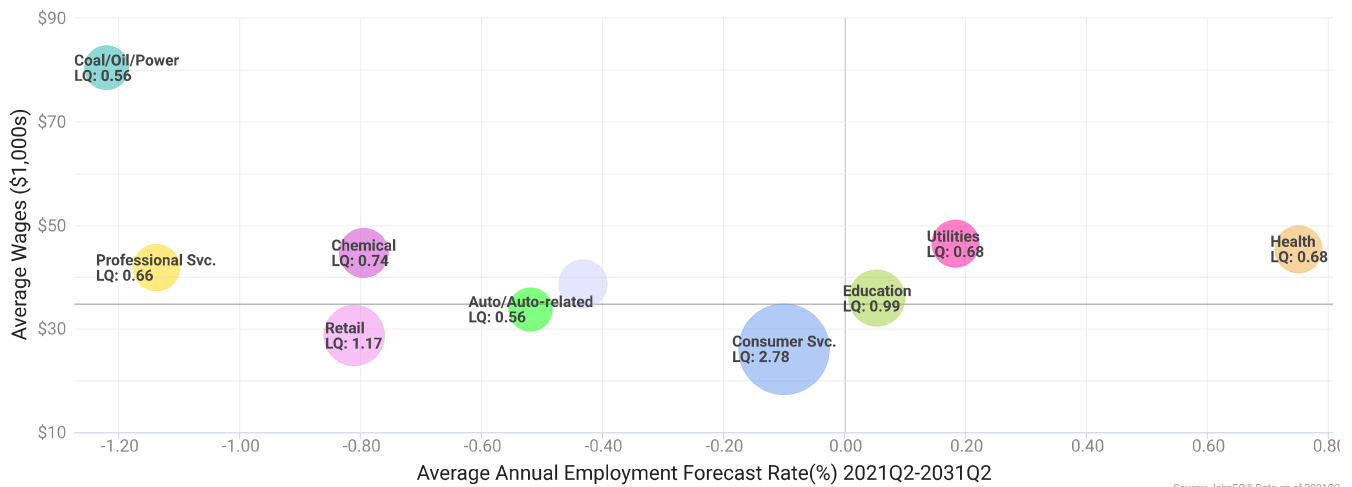
3. Data represent found online ads active within the last thirty days in the selected region; data represents a sampling rather than the complete universe of postings. Ads lacking zip code information but designating a place (city, town, etc.) may be assigned to the zip code with greatest employment in that place for queries in this analytic. Due to alternative county-assignment algorithms, ad counts in this analytic may not match that shown in RTI (nor in the popup window ad list).

Occupation employment data are estimated via industry employment data and the estimated industry/occupation mix. Industry employment data are derived from the Quarterly Census of Employment and Wages, provided by the Bureau of Labor Statistics and currently updated through 2021Q1, imputed where necessary with preliminary estimates updated to 2021Q2. Wages by occupation are as of 2020 provided by the BLS and imputed where necessary. Forecast employment growth uses national projections from the Bureau of Labor Statistics adapted for regional growth patterns.

Industry Clusters

A cluster is a geographic concentration of interrelated industries or occupations. The industry cluster in Taney County, Missouri with the highest relative concentration is Consumer Svc. with a location quotient of 2.78. This cluster employs 10,917 workers in the region with an average wage of \$26,109. Employment in the Consumer Svc. cluster is projected to contract in the region about 0.1% per year over the next ten years.

Industry Clusters for Taney County, Missouri as of 2021Q2

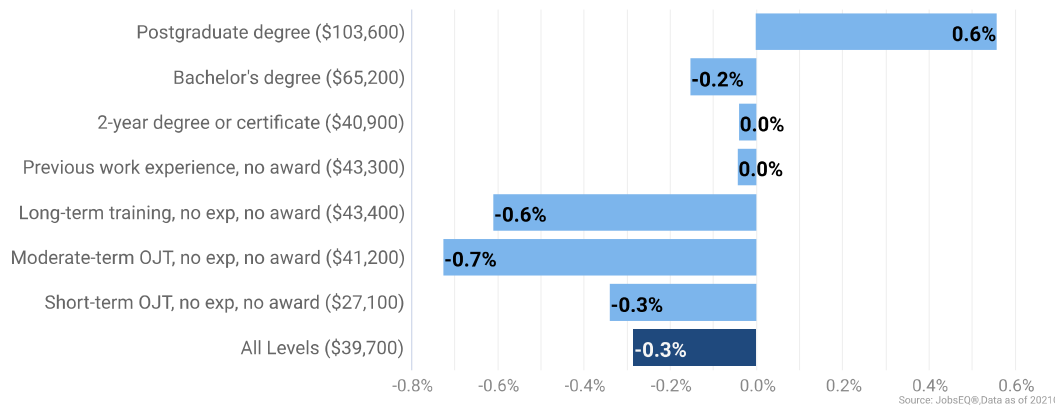


Location quotient and average wage data are derived from the Quarterly Census of Employment and Wages, provided by the Bureau of Labor Statistics, imputed where necessary, and updated through 2021Q1 with preliminary estimates updated to 2021Q2. Forecast employment growth uses national projections from the Bureau of Labor Statistics adapted for regional growth patterns.

Education Levels

Expected growth rates for occupations vary by the education and training required. While all employment in Taney County, Missouri is projected to contract 0.3% over the next ten years, occupations typically requiring a postgraduate degree are expected to grow 0.6% per year, those requiring a bachelor's degree are forecast to contract 0.2% per year, and occupations typically needing a 2-year degree or certificate are expected to contract 0.0% per year.

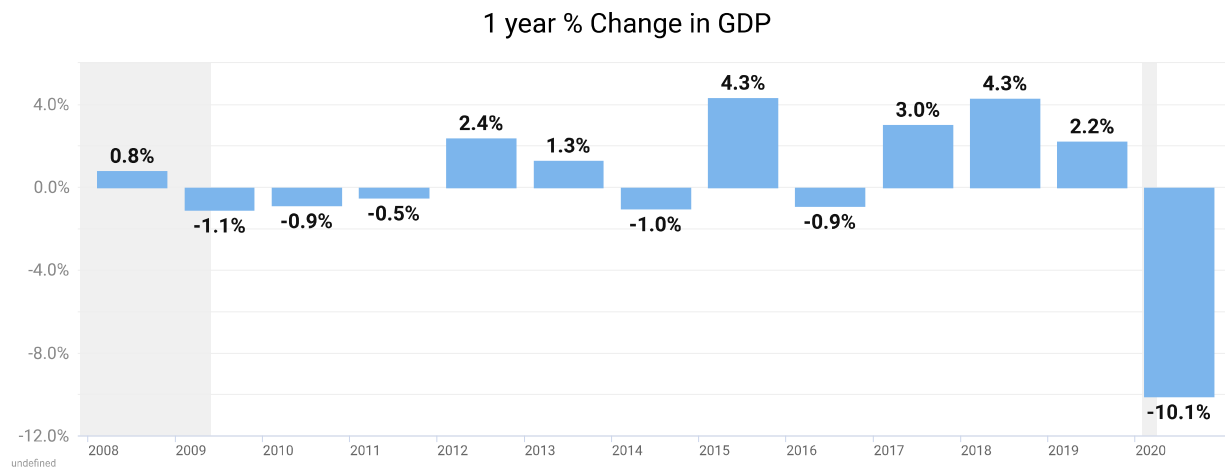
Annual Average Projected Job Growth by Training Required for Taney County, Missouri



Employment by occupation data are estimates as of 2021Q2. Education levels of occupations are based on BLS assignments. Forecast employment growth uses national projections from the Bureau of Labor Statistics adapted for regional growth patterns.

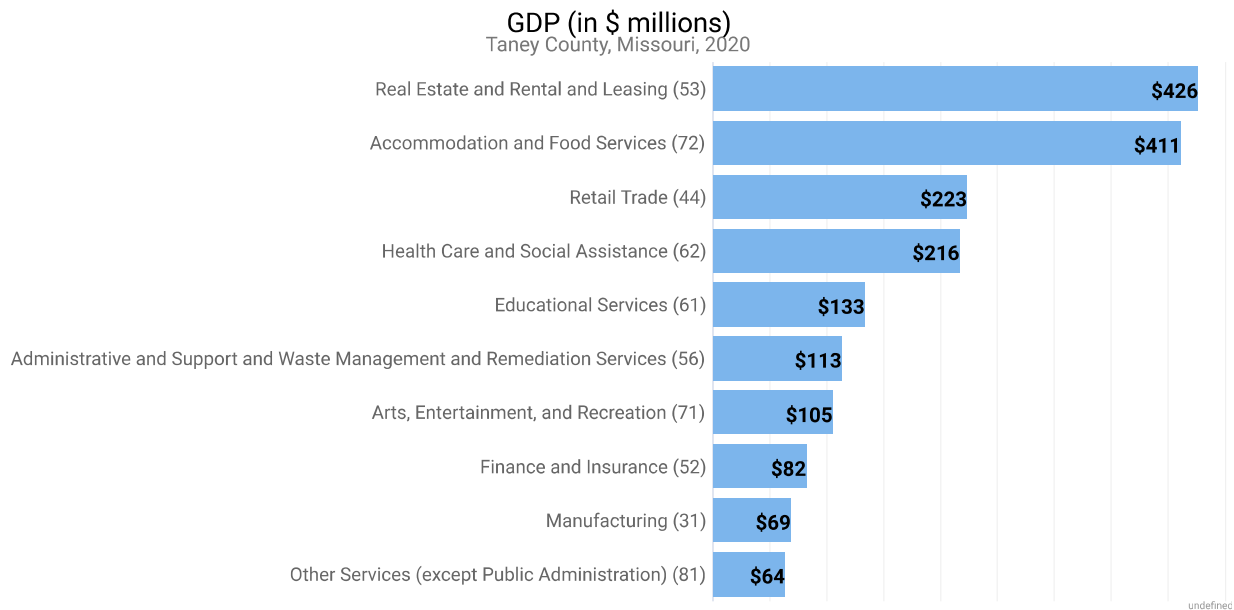
Gross Domestic Product

Gross Domestic Product (GDP) is the total value of goods and services produced by a region. In 2020, nominal GDP in Taney County, Missouri contracted 10.1%. This follows growth of 2.2% in 2019. As of 2020, total GDP in Taney County, Missouri was \$2,199,362,000.



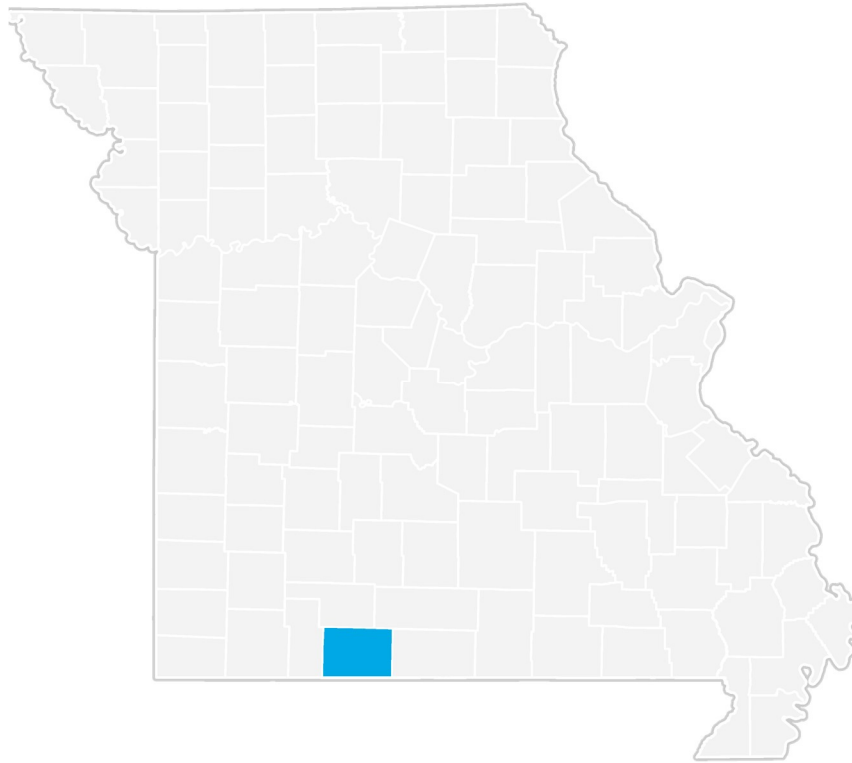
Gross Domestic Product data are provided by the Bureau of Economic Analysis, imputed by Chmura where necessary, updated through 2020.

Of the sectors in Taney County, Missouri, Real Estate and Rental and Leasing contributed the largest portion of GDP in 2020, \$426,175,000. The next-largest contributions came from Accommodation and Food Services (\$411,073,000); Retail Trade (\$223,378,000); and Health Care and Social Assistance (\$216,316,000).



Gross Domestic Product data are provided by the Bureau of Economic Analysis, imputed by Chmura where necessary, updated through 2020.

Taney County, Missouri Regional Map



FAQ

What is a location quotient?

A location quotient (LQ) is a measurement of concentration in comparison to the nation. An LQ of 1.00 indicates a region has the same concentration of an industry (or occupation) as the nation. An LQ of 2.00 would mean the region has twice the expected employment compared to the nation and an LQ of 0.50 would mean the region has half the expected employment in comparison to the nation.

What is separation demand?

Separation demand is the number of jobs required due to separations—labor force exits (including retirements) and turnover resulting from workers moving from one occupation into another. Note that separation demand does not include all turnover—it does not include when workers stay in the same occupation but switch employers. The total projected demand for an occupation is the sum of the separation demand and the growth demand (which is the increase or decrease of jobs in an occupation expected due to expansion or contraction of the overall number of jobs in that occupation).

What is a cluster?

A cluster is a geographic concentration of interrelated industries or occupations. If a regional cluster has a location quotient of 1.25 or greater, the region is considered to possess a competitive advantage in that cluster.

What is the difference between industry wages and occupation wages?

Industry wages and occupation wages are estimated via separate data sets, often the time periods being reported do not align, and wages are defined slightly differently in the two systems (for example, certain bonuses are included in the industry wages but not the occupation wages). It is therefore common that estimates of the average industry wages and average occupation wages in a region do not match exactly.

What is NAICS?

The North American Industry Classification System (NAICS) is used to classify business establishments according to the type of economic activity. The NAICS Code comprises six levels, from the “all industry” level to the 6-digit level. The first two digits define the top level category, known as the “sector,” which is the level examined in this report.

What is SOC?

The Standard Occupational Classification system (SOC) is used to classify workers into occupational categories. All workers are classified into one of over 804 occupations according to their occupational definition. To facilitate classification, occupations are combined to form 22 major groups, 95 minor groups, and 452 occupation groups. Each occupation group includes detailed occupations requiring similar job duties, skills, education, or experience.

About This Report

This report and all data herein were produced by JobsEQ®, a product of Chmura Economics & Analytics. The information contained herein was obtained from sources we believe to be reliable. However, we cannot guarantee its accuracy and completeness.

Source: JobsEQ®, <http://www.chmuraecon.com/jobseq>

Copyright © 2022 Chmura Economics & Analytics, All Rights Reserved.