



Economic Overview

April 1, 2020

City of Forsyth, MO



Taney County Partnership
Branson/Lakes Area Chamber of Commerce
4100 Gretna Rd
Branson, MO 65616
www.taneycountypartnership.com

Demographic Profile.....	3
Employment Trends	5
Wage Trends	5
Cost of Living Index.....	6
Industry Snapshot	7
Occupation Snapshot.....	9
Industry Clusters	11
Education Levels.....	12
City of Forsyth, MO Regional Map	13
FAQ.....	14

Demographic Profile

The population in the City of Forsyth, MO was 2,536 per American Community Survey data for 2014-2018.

The region has a civilian labor force of 888 with a participation rate of 42.0%. Of individuals 25 to 64 in the City of Forsyth, MO, 19.0% have a bachelor's degree or higher which compares with 32.9% in the nation.

The median household income in the City of Forsyth, MO is \$37,872 and the median house value is \$114,300.

Summary¹

	Percent			Value		
	City of Forsyth, MO	Missouri	USA	City of Forsyth, MO	Missouri	USA
Demographics						
Population (ACS)	—	—	—	2,536	6,090,062	322,903,030
Male	48.1%	49.1%	49.2%	1,219	2,988,772	158,984,190
Female	51.9%	50.9%	50.8%	1,317	3,101,290	163,918,840
Median Age ²	—	—	—	50.5	38.5	37.9
Under 18 Years	19.6%	22.7%	22.8%	496	1,385,063	73,553,240
18 to 24 Years	6.7%	9.5%	9.6%	171	580,161	30,903,719
25 to 34 Years	11.4%	13.3%	13.8%	288	809,024	44,567,976
35 to 44 Years	7.9%	12.0%	12.6%	201	733,520	40,763,210
45 to 54 Years	11.7%	12.9%	13.2%	296	787,960	42,589,573
55 to 64 Years	12.2%	13.3%	12.8%	309	812,642	41,286,731
65 to 74 Years	14.9%	9.2%	8.8%	378	561,486	28,535,419
75 Years, and Over	15.7%	6.9%	6.4%	397	420,206	20,703,162
Race: White	91.0%	82.2%	72.7%	2,308	5,008,342	234,904,818
Race: Black or African American	2.1%	11.6%	12.7%	54	704,896	40,916,113
Race: American Indian and Alaska Native	0.6%	0.4%	0.8%	16	26,952	2,699,073
Race: Asian	2.2%	1.9%	5.4%	55	116,720	17,574,550
Race: Native Hawaiian and Other Pacific Islander	0.0%	0.1%	0.2%	0	6,662	582,718
Race: Some Other Race	1.0%	1.2%	4.9%	26	71,162	15,789,961
Race: Two or More Races	3.0%	2.6%	3.2%	77	155,328	10,435,797
Hispanic or Latino (of any race)	3.9%	4.1%	17.8%	99	249,105	57,517,935
Economic						
Labor Force Participation Rate and Size (civilian population 16 years and over) ⁵	42.0%	62.8%	63.2%	888	3,044,052	162,248,196
Prime-Age Labor Force Participation Rate and Size (civilian population 25-54) ⁵	63.9%	82.3%	81.8%	502	1,909,550	104,136,254
Armed Forces Labor Force ⁵	0.0%	0.4%	0.4%	0	18,444	1,028,133
Veterans, Age 18-64 ⁵	8.3%	5.5%	4.7%	105	203,888	9,398,789
Veterans Labor Force Participation Rate and Size, Age 18-64 ⁵	42.9%	73.8%	76.3%	45	150,552	7,168,168
Median Household Income ^{2,5}	—	—	—	\$37,872	\$53,560	\$60,293
Per Capita Income ⁵	—	—	—	\$22,831	\$29,537	\$32,621
Mean Commute Time (minutes) ⁵	—	—	—	31.3	23.6	26.6
Commute via Public Transportation ⁵	0.0%	1.4%	5.0%	0	40,311	7,602,145
Educational Attainment, Age 25-64						
No High School Diploma	9.8%	9.1%	11.2%	107	285,139	18,885,967
High School Graduate	34.8%	28.6%	25.8%	381	897,820	43,699,272
Some College, No Degree	27.3%	22.9%	21.0%	299	720,174	35,525,113
Associate's Degree	9.0%	8.8%	9.1%	99	277,838	15,389,737
Bachelor's Degree	11.7%	19.4%	20.8%	128	610,001	35,261,652
Postgraduate Degree	7.3%	11.2%	12.1%	80	352,174	20,445,749
Housing						

Summary¹

	Percent			Value		
	City of Forsyth, MO	Missouri	USA	City of Forsyth, MO	Missouri	USA
Total Housing Units	—	—	—	1,180	2,775,635	136,384,292
Median House Value (of owner-occupied units) ²	—	—	—	\$114,300	\$151,600	\$204,900
Homeowner Vacancy	0.0%	1.8%	1.7%	0	30,202	1,304,850
Rental Vacancy	0.0%	6.7%	6.0%	0	57,916	2,822,053
Renter-Occupied Housing Units (% of Occupied Units)	33.6%	33.2%	36.2%	330	794,426	43,285,318
Occupied Housing Units with No Vehicle Available (% of Occupied Units) ⁵	4.8%	7.0%	8.7%	47	167,384	10,424,934
Social						
Poverty Level (of all people) ⁵	20.2%	14.2%	14.1%	456	837,930	44,257,979
Households Receiving Food Stamps/SNAP	14.3%	11.6%	12.2%	140	278,848	14,635,287
Enrolled in Grade 12 (% of total population)	2.1%	1.3%	1.4%	53	77,672	4,442,295
Disconnected Youth ^{3,5}	21.8%	2.7%	2.6%	27	8,659	438,452
Children in Single Parent Families (% of all children) ⁵	15.3%	34.1%	34.3%	60	445,603	23,973,249
Uninsured	17.3%	9.7%	9.4%	399	581,002	29,752,767
With a Disability, Age 18-64 ⁵	16.0%	12.6%	10.3%	181	459,996	20,240,504
With a Disability, Age 18-64, Labor Force Participation Rate and Size ⁵	16.0%	40.4%	41.6%	29	185,695	8,421,018
Foreign Born	4.3%	4.1%	13.5%	109	247,788	43,539,499
Speak English Less Than Very Well (population 5 yrs and over)	1.0%	2.2%	8.5%	23	124,173	25,647,781

Source: [JobsEQ®](#)

1. American Community Survey 2014-2018, unless noted otherwise

2. Median values for certain aggregate regions (such as MSAs) may be estimated as the weighted averages of the median values from the composing counties.

3. Disconnected Youth are 16-19 year olds who are (1) not in school, (2) not high school graduates, and (3) either unemployed or not in the labor force.

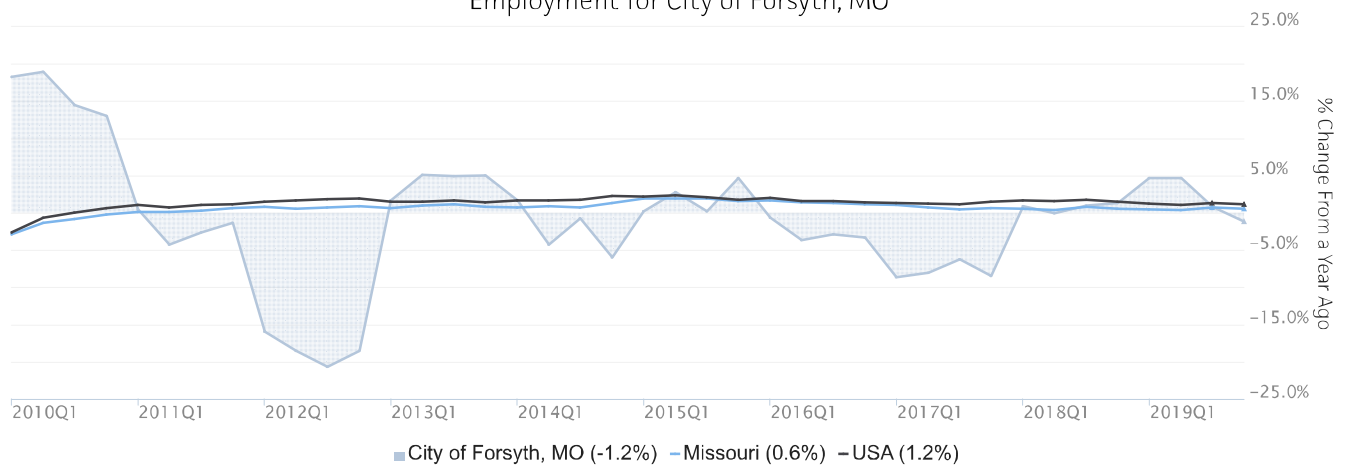
4. Census 2018, annual average growth rate since 2008

5. See Rio Arriba errata note in the Data Dictionary.

Employment Trends

As of 2019Q4, total employment for the City of Forsyth, MO was 1,510 (based on a four-quarter moving average). Over the year ending 2019Q4, employment declined 1.2% in the region.

Employment for City of Forsyth, MO

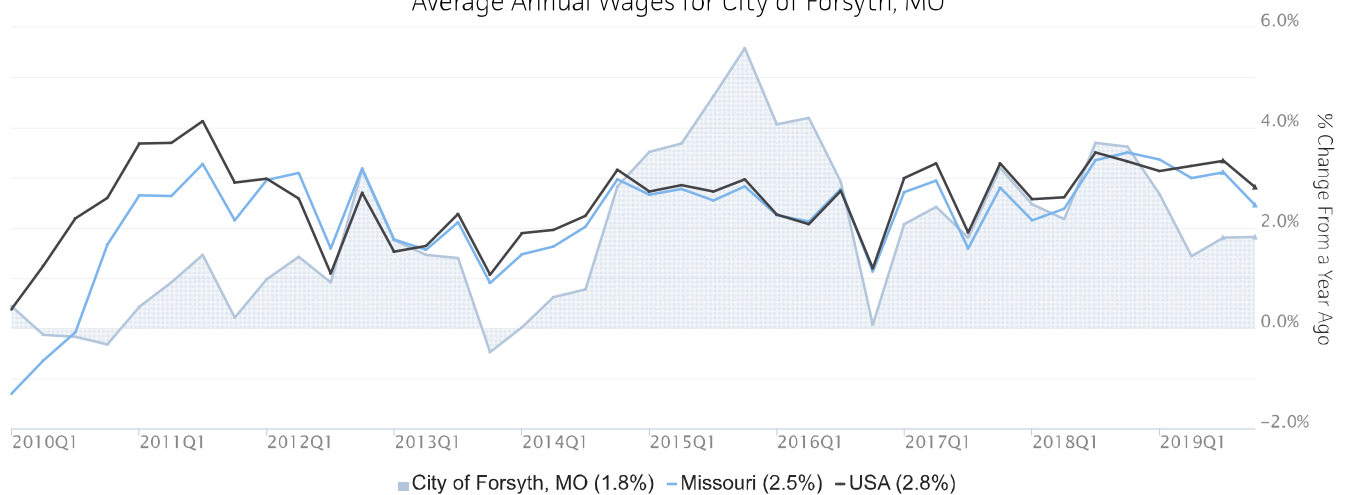


Employment data are derived from the Quarterly Census of Employment and Wages, provided by the Bureau of Labor Statistics and imputed where necessary. Data are updated through 2019Q2 with preliminary estimates updated to 2019Q4.

Wage Trends

The average worker in the City of Forsyth, MO earned annual wages of \$32,688 as of 2019Q4. Average annual wages per worker increased 1.8% in the region over the preceding four quarters. For comparison purposes, annual average wages were \$57,413 in the nation as of 2019Q4.

Average Annual Wages for City of Forsyth, MO



Annual average wages per worker data are derived from the Quarterly Census of Employment and Wages, provided by the Bureau of Labor Statistics and imputed where necessary. Data are updated through 2019Q2 with preliminary estimates updated to 2019Q4.

Cost of Living Index

The Cost of Living Index estimates the relative price levels for consumer goods and services. When applied to wages and salaries, the result is a measure of relative purchasing power. The cost of living is 15.1% lower in City of Forsyth, MO than the U.S. average.

Cost of Living Information

	Annual Average Salary	Cost of Living Index (Base US)	US Purchasing Power
City of Forsyth, MO	\$32,688	84.9	\$38,481
Missouri	\$48,894	87.9	\$55,644
USA	\$57,413	100.0	\$57,413

Source: [JobsEQ®](#)

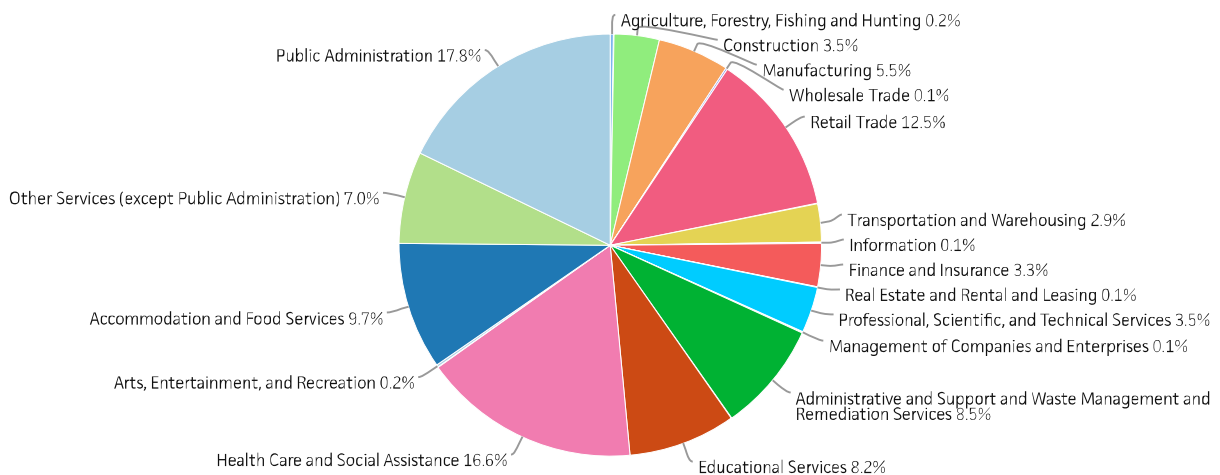
Data as of 2019Q4

Cost of Living per C2ER, data as of 2019q4, imputed by Chmura where necessary.

Industry Snapshot

The largest sector in the City of Forsyth, MO is Public Administration, employing 269 workers. The next-largest sectors in the region are Health Care and Social Assistance (251 workers) and Retail Trade (189). High location quotients (LQs) indicate sectors in which a region has high concentrations of employment compared to the national average. The sectors with the largest LQs in the region are Public Administration (LQ = 3.81), Other Services (except Public Administration) (1.58), and Administrative and Support and Waste Management and Remediation Services (1.32).

Total Workers for City of Forsyth, MO by Industry



Source: JobsEQ®, Data as of 2019Q4

Employment data are derived from the Quarterly Census of Employment and Wages, provided by the Bureau of Labor Statistics and imputed where necessary. Data are updated through 2019Q2 with preliminary estimates updated to 2019Q4.

Sectors in the City of Forsyth, MO with the highest average wages per worker are Management of Companies and Enterprises (\$76,937), Real Estate and Rental and Leasing (\$57,435), and Information (\$55,783). Regional sectors with the best job growth (or most moderate job losses) over the last 10 years are Health Care and Social Assistance (+150 jobs), Other Services (except Public Administration) (+55), and Transportation and Warehousing (+42).

Over the next 5 years, employment in the City of Forsyth, MO is projected to expand by 39 jobs. The fastest growing sector in the region is expected to be Health Care and Social Assistance with a +1.9% year-over-year rate of growth. The strongest forecast by number of jobs over this period is expected for Health Care and Social Assistance (+24 jobs), Accommodation and Food Services (+8), and Public Administration (+4).

NAICS	Industry	Current			10-Year History		5-Year Forecast				
		Empl	Avg Ann Wages	LQ	Empl Change	Ann %	Total Demand	Exits	Transfers	Empl Growth	Ann % Growth
92	Public Administration	269	\$36,150	3.81	23	0.9%	128	53	71	4	0.3%
62	Health Care and Social Assistance	251	\$41,589	1.16	150	9.5%	148	61	63	24	1.9%
44	Retail Trade	189	\$23,034	1.22	-7	-0.4%	125	56	70	-1	-0.1%
72	Accommodation and Food Services	147	\$24,337	1.08	-357	-11.6%	129	54	68	8	1.0%
56	Administrative and Support and Waste Management and Remediation Services	128	\$42,296	1.32	-17	-1.2%	73	31	42	0	0.0%
61	Educational Services	124	\$36,152	1.01	35	3.3%	57	28	30	0	-0.1%
81	Other Services (except Public Administration)	106	\$22,015	1.58	55	7.5%	62	28	33	1	0.2%
31	Manufacturing	83	\$37,928	0.67	27	3.9%	40	16	27	-3	-0.6%
23	Construction	53	\$36,316	0.61	-74	-8.4%	30	10	17	3	1.1%
54	Professional, Scientific, and Technical Services	53	\$38,628	0.52	10	2.2%	24	8	14	1	0.5%
52	Finance and Insurance	50	\$54,729	0.85	5	1.1%	23	9	15	0	0.0%
48	Transportation and Warehousing	44	\$29,809	0.65	42	34.3%	25	10	14	1	0.5%
11	Agriculture, Forestry, Fishing and Hunting	4	\$12,161	0.18	-11	-12.9%	2	1	1	0	-0.3%
71	Arts, Entertainment, and Recreation	3	\$28,485	0.11	-3	-6.0%	2	1	1	0	0.4%
42	Wholesale Trade	2	\$40,156	0.03	-3	-9.9%	1	0	1	0	0.3%
51	Information	1	\$55,783	0.04	-23	-26.6%	1	0	0	0	1.1%
53	Real Estate and Rental and Leasing	1	\$57,435	0.03	-35	-31.5%	0	0	0	0	0.6%
55	Management of Companies and Enterprises	1	\$76,937	0.06	-5	-15.0%	1	0	0	0	0.5%
21	Mining, Quarrying, and Oil and Gas Extraction	0	n/a	0.00	-2	n/a	0	0	0	0	
22	Utilities	0	n/a	0.00	-6	n/a	0	0	0	0	
Total - All Industries		1,510	\$32,688	1.00	-197	-1.2%	870	355	476	39	0.5%

Source: [JobsEQ®](#)

Employment data are derived from the Quarterly Census of Employment and Wages, provided by the Bureau of Labor Statistics and imputed where necessary. Data are updated through 2019Q2 with preliminary estimates updated to 2019Q4. Forecast employment growth uses national projections adapted for regional growth patterns.

Occupation Snapshot

The largest major occupation group in the City of Forsyth, MO is Office and Administrative Support Occupations, employing 243 workers. The next-largest occupation groups in the region are Sales and Related Occupations (149 workers) and Food Preparation and Serving Related Occupations (126). High location quotients (LQs) indicate occupation groups in which a region has high concentrations of employment compared to the national average. The major groups with the largest LQs in the region are Protective Service Occupations (LQ = 3.07), Community and Social Service Occupations (2.46), and Healthcare Support Occupations (1.32).

Occupation groups in the City of Forsyth, MO with the highest average wages per worker are Management Occupations (\$80,500), Computer and Mathematical Occupations (\$76,900), and Legal Occupations (\$76,300). The unemployment rate in the region varied among the major groups from 1.7% among Healthcare Practitioners and Technical Occupations to 10.2% among Arts, Design, Entertainment, Sports, and Media Occupations.

Over the next 5 years, the fastest growing occupation group in the City of Forsyth, MO is expected to be Personal Care and Service Occupations with a +1.9% year-over-year rate of growth. The strongest forecast by number of jobs over this period is expected for Personal Care and Service Occupations (+7 jobs) and Food Preparation and Serving Related Occupations (+6). Over the same period, the highest separation demand (occupation demand due to retirements and workers moving from one occupation to another) is expected in Office and Administrative Support Occupations (131 jobs) and Food Preparation and Serving Related Occupations (111).

City of Forsyth, MO, 2019q4¹

SOC	Occupation	Current						10-Year History		5-Year Forecast				
		Empl	Avg Ann Wages ²	LQ	Unempl	Unempl Rate	Online Job Ads ³	Empl Change	Ann %	Total Demand	Exits	Transfers	Empl Growth	Ann % Growth
43-0000	Office and Administrative Support	243	\$32,200	1.12	8	5.3%	n/a	-29	-1.1%	128	61	70	-3	-0.2%
41-0000	Sales and Related	149	\$33,300	1.00	8	6.6%	n/a	-59	-3.3%	107	49	59	-1	-0.1%
35-0000	Food Preparation and Serving Related	126	\$22,700	0.97	15	7.7%	n/a	-148	-7.5%	117	50	61	6	0.9%
33-0000	Protective Service	100	\$43,400	3.07	1	4.3%	n/a	5	0.5%	43	19	22	2	0.4%
25-0000	Education, Training, and Library	99	\$40,400	1.17	1	4.0%	n/a	30	3.7%	42	21	20	1	0.1%
29-0000	Healthcare Practitioners and Technical	90	\$57,900	1.04	1	1.7%	n/a	33	4.6%	32	12	14	6	1.3%
53-0000	Transportation and Material Moving	79	\$37,500	0.76	4	6.2%	n/a	15	2.1%	50	21	28	1	0.4%
51-0000	Production	73	\$35,000	0.81	3	5.2%	n/a	14	2.2%	39	15	25	-1	-0.4%
39-0000	Personal Care and Service	69	\$25,500	1.05	2	7.2%	n/a	24	4.3%	62	28	27	7	1.9%
11-0000	Management	68	\$80,500	0.72	1	2.1%	n/a	-20	-2.5%	29	9	18	2	0.6%
21-0000	Community and Social Service	63	\$39,600	2.46	0	n/a	n/a	39	10.1%	39	13	22	4	1.3%
47-0000	Construction and Extraction	61	\$43,300	0.89	2	6.3%	n/a	-43	-5.2%	35	12	20	3	0.9%
31-0000	Healthcare Support	55	\$26,700	1.32	1	4.5%	n/a	31	8.6%	37	17	16	5	1.7%
13-0000	Business and Financial Operations	52	\$57,300	0.65	0	n/a	n/a	0	0.0%	25	8	16	2	0.6%
49-0000	Installation, Maintenance, and Repair	49	\$38,500	0.85	2	3.5%	n/a	-16	-2.8%	25	9	15	1	0.4%
37-0000	Building and Grounds Cleaning and Maintenance	47	\$26,400	0.90	4	6.8%	n/a	-88	-10.0%	31	15	15	1	0.5%
15-0000	Computer and Mathematical	22	\$76,900	0.49	0	n/a	n/a	1	0.4%	8	2	5	1	0.6%

City of Forsyth, MO, 2019q4¹

SOC	Occupation	Current						10-Year History		5-Year Forecast				
		Empl	Avg Ann Wages ²	LQ	Unempl	Unempl Rate	Online Job Ads ³	Empl Change	Ann %	Total Demand	Exits	Transfers	Empl Growth	Ann % Growth
27-0000	Arts, Design, Entertainment, Sports, and Media	22	\$43,700	0.82	1	10.2%	n/a	3	1.3%	11	5	6	0	0.2%
17-0000	Architecture and Engineering	19	\$69,600	0.72	0	n/a	n/a	6	4.1%	7	2	4	0	0.4%
19-0000	Life, Physical, and Social Science	13	\$54,300	1.08	0	n/a	n/a	7	7.3%	6	2	4	0	0.7%
23-0000	Legal	9	\$76,300	0.73	0	n/a	n/a	-1	-0.7%	3	1	2	0	0.5%
45-0000	Farming, Fishing, and Forestry	2	\$34,500	0.19	0	n/a	n/a	0	-0.6%	1	0	1	0	0.0%
Total - All Occupations		1,510	\$39,800	1.00	53	5.8%	n/a	-197	-1.2%	879	372	469	38	0.5%

Source: [JobsEQ®](#)

Data as of 2019Q4 unless noted otherwise

Note: Figures may not sum due to rounding.

1. Data based on a four-quarter moving average unless noted otherwise.

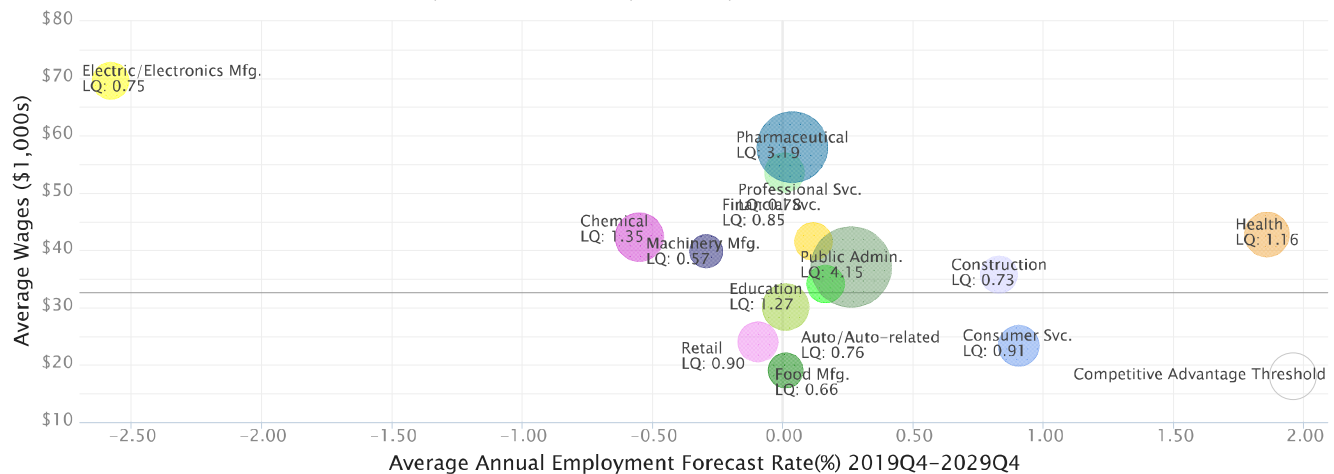
2. Wage data are as of 2018 and represent the average for all Covered Employment

Occupation employment data are estimated via industry employment data and the estimated industry/occupation mix. Industry employment data are derived from the Quarterly Census of Employment and Wages, provided by the Bureau of Labor Statistics and currently updated through 2019Q2, imputed where necessary with preliminary estimates updated to 2019Q4. Wages by occupation are as of 2018 provided by the BLS and imputed where necessary. Forecast employment growth uses national projections from the Bureau of Labor Statistics adapted for regional growth patterns.

Industry Clusters

A cluster is a geographic concentration of interrelated industries or occupations. The industry cluster in the City of Forsyth, MO with the highest relative concentration is Public Admin. with a location quotient of 4.15. This cluster employs 269 workers in the region with an average wage of \$37,083. Employment in the Public Admin. cluster is projected to expand in the region about 0.3% per year over the next ten years.

Industry Clusters for City of Forsyth, MO as of 2019Q4



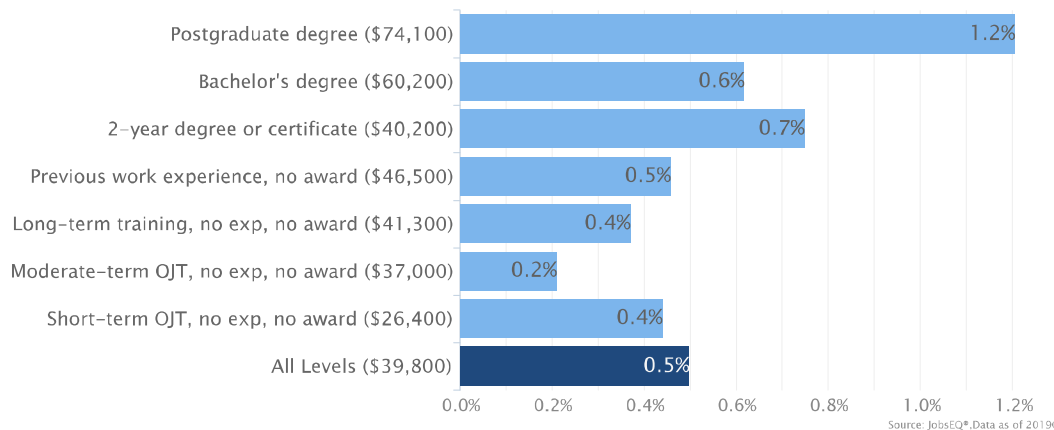
Source: JobsEQ®, Data as of 2019Q4

Location quotient and average wage data are derived from the Quarterly Census of Employment and Wages, provided by the Bureau of Labor Statistics, imputed where necessary, and updated through 2019Q2 with preliminary estimates updated to 2019Q4. Forecast employment growth uses national projections from the Bureau of Labor Statistics adapted for regional growth patterns.

Education Levels

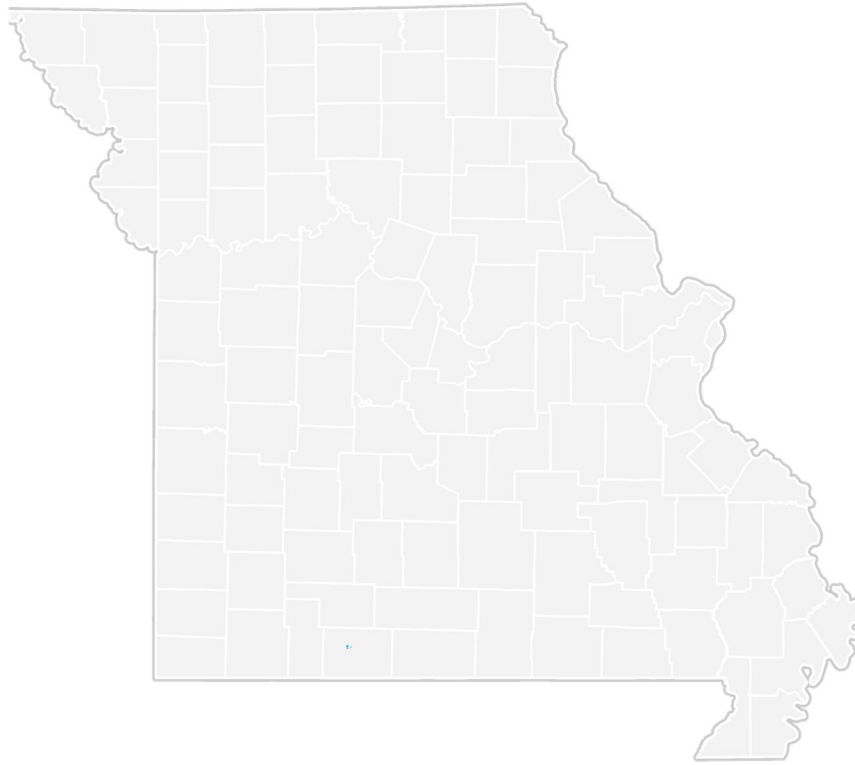
Expected growth rates for occupations vary by the education and training required. While all employment in the City of Forsyth, MO is projected to grow 0.5% over the next ten years, occupations typically requiring a postgraduate degree are expected to grow 1.2% per year, those requiring a bachelor's degree are forecast to grow 0.6% per year, and occupations typically needing a 2-year degree or certificate are expected to grow 0.7% per year.

Annual Average Projected Job Growth by Training Required for City of Forsyth, MO



Employment by occupation data are estimates as of 2019Q4. Education levels of occupations are based on BLS assignments. Forecast employment growth uses national projections from the Bureau of Labor Statistics adapted for regional growth patterns.

City of Forsyth, MO Regional Map



FAQ

What is a location quotient?

A location quotient (LQ) is a measurement of concentration in comparison to the nation. An LQ of 1.00 indicates a region has the same concentration of an industry (or occupation) as the nation. An LQ of 2.00 would mean the region has twice the expected employment compared to the nation and an LQ of 0.50 would mean the region has half the expected employment in comparison to the nation.

What is separation demand?

Separation demand is the number of jobs required due to separations—labor force exits (including retirements) and turnover resulting from workers moving from one occupation into another. Note that separation demand does not include all turnover—it does not include when workers stay in the same occupation but switch employers. The total projected demand for an occupation is the sum of the separation demand and the growth demand (which is the increase or decrease of jobs in an occupation expected due to expansion or contraction of the overall number of jobs in that occupation).

What is a cluster?

A cluster is a geographic concentration of interrelated industries or occupations. If a regional cluster has a location quotient of 1.25 or greater, the region is considered to possess a competitive advantage in that cluster.

What is the difference between industry wages and occupation wages?

Industry wages and occupation wages are estimated via separate data sets, often the time periods being reported do not align, and wages are defined slightly differently in the two systems (for example, certain bonuses are included in the industry wages but not the occupation wages). It is therefore common that estimates of the average industry wages and average occupation wages in a region do not match exactly.

What is NAICS?

The North American Industry Classification System (NAICS) is used to classify business establishments according to the type of economic activity. The NAICS Code comprises six levels, from the “all industry” level to the 6-digit level. The first two digits define the top level category, known as the “sector,” which is the level examined in this report.

What is SOC?

The Standard Occupational Classification system (SOC) is used to classify workers into occupational categories. All workers are classified into one of over 820 occupations according to their occupational definition. To facilitate classification, occupations are combined to form 23 major groups, 96 minor groups, and 449 occupation groups. Each occupation group includes detailed occupations requiring similar job duties, skills, education, or experience.

About This Report

This report and all data herein were produced by JobsEQ®, a product of Chmura Economics & Analytics. The information contained herein was obtained from sources we believe to be reliable. However, we cannot guarantee its accuracy and completeness.